



## Helica™ Evanescent Coupler – Standard, Polarization Maintaining, or Polarizing

The **Helica™ Evanescent Coupler (Helica™ EC)** is a fiber-based coupler for convenient and efficient evanescent coupling of light into planar waveguide structures or other microphotronics. This coupler is available in three basic variations:

- EC-S: Standard (S) evanescent coupler
- EC-PM: Polarization maintaining (PM) evanescent coupler
- EC-P: Polarizing (P) evanescent coupler

The **Helica™ EC** is typically provided pre-attached to an Aluminum frame (see below) which can be mounted onto positioning equipment for optimal mating with the photonic device of interest. However, customized mounting specifications can be accommodated as well.

The **Helica™ EC** products are typically fabricated of Corning® SMF28™ optical fibers but can be provided in other fibers to accommodate, for instance, other wavelengths of interest. Similarly, polarization maintaining versions typically utilize Corning® Puremode™ PM photonic fibers but can utilize any PM fibers to suit your integration needs. Polarizing **Helica™ ECs** integrate Chiral Photonics' in-fiber polarizer together with the evanescent coupler to deliver polarized light to the coupled device.

### Applications:

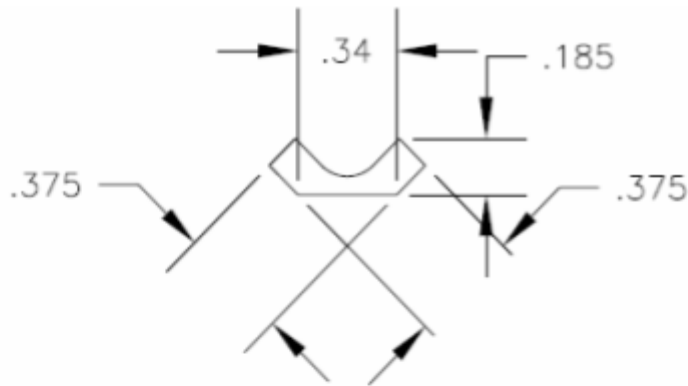
- Planar waveguide structure coupling
- Photonic microstructure coupling
- Nanostructure coupling



# Chiral Photonics

Tel: 973-732-0030 sales@chiralphotonics.com

Helica™ Platform



All Dimensions in Inches  
unless otherwise noted

Tolerances:  
angular  $\pm 3^\circ$   
.XX  $\pm .02$   
.XXX  $\pm .005$

